

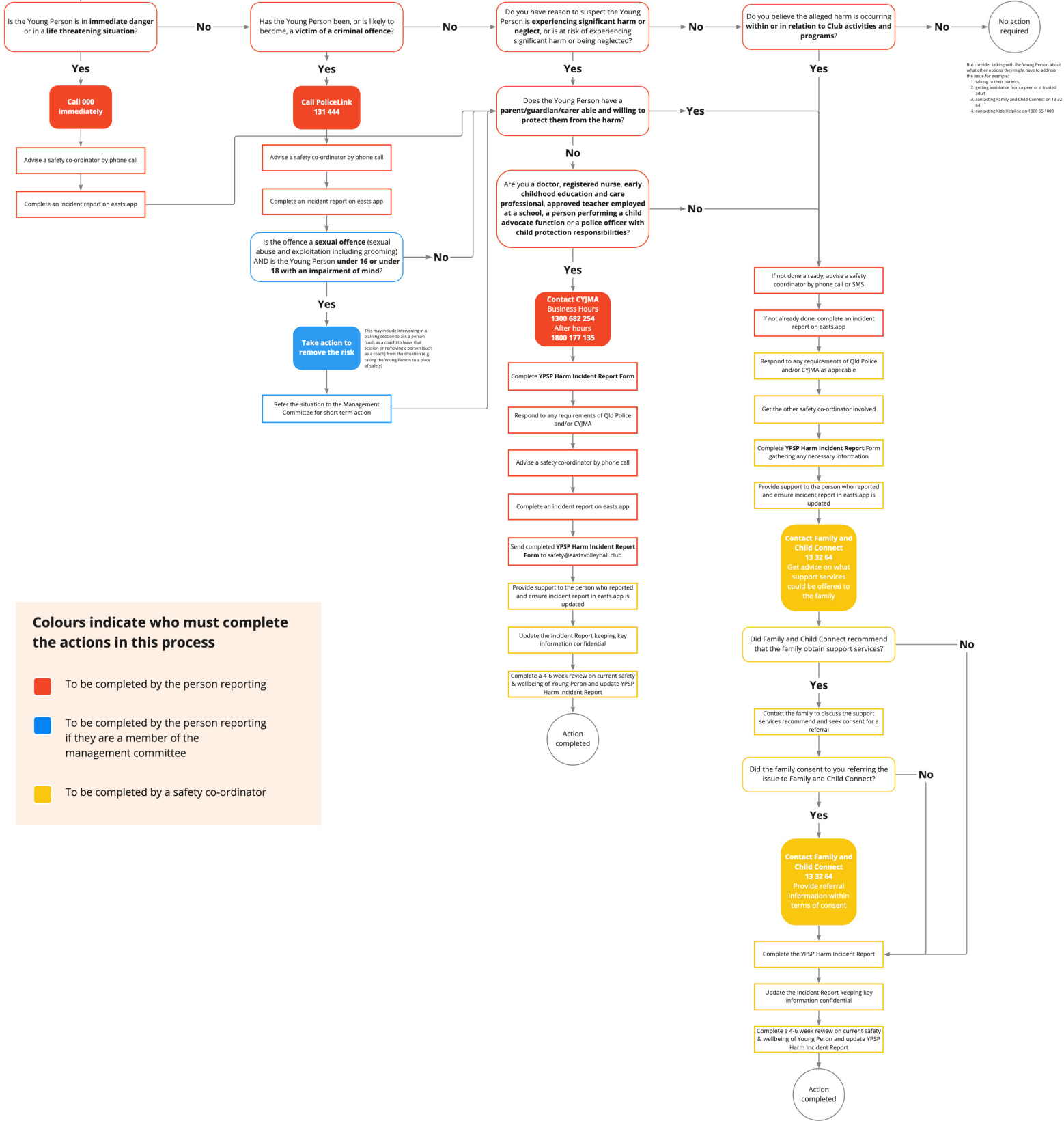
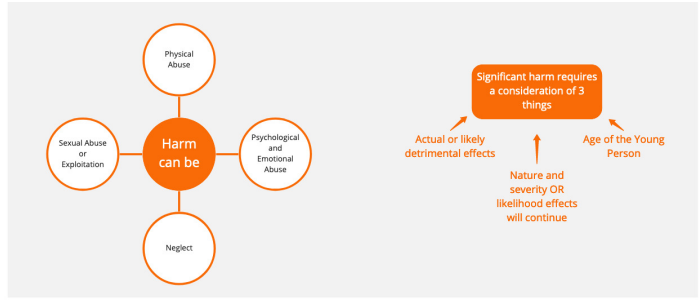
# Reporting and Managing Disclosures or Suspicions of Harm

## Disclosure of Harm

When someone, including a young person, tells you about significant harm that has happened, is happening, or is likely to happen to a young person.

## Suspicion of Harm

When you have a reasonable suspicion that a Young Person suffered, is suffering, or is at an unacceptable risk of suffering, significant harm.



But consider talking with the Young Person about what other options they might have to address the issue for example:  
 1. talking to their parents,  
 2. getting assistance from a peer or a trusted adult,  
 3. contacting Family and Child Connect on 13 32 64,  
 4. contacting Kids Helpline on 1800 55 1800

### Colours indicate who must complete the actions in this process

- To be completed by the person reporting
- To be completed by the person reporting if they are a member of the management committee
- To be completed by a safety co-ordinator